

LUMIÈRE

Evergreen

THE AURA

A New International Community.
Smart City, Hanoi

A New International Community.

Smart City, Hanoi

LUMIÈRE

Evergreen

Inheriting the values of the prestigious LUMIÈRE brand, LUMIÈRE Evergreen epitomizes a commitment to well-being values, exceptional quality standards, offering an unparalleled range of commercial and service amenities from globally acclaimed brands, solidifying the reputation of Masterise Homes.

LUMIÈRE Evergreen - A new international community converges in Western Hanoi.



Project Name	LUMIÈRE Evergreen	Construction Density	31%
Developer	Masterise Homes - A member of the Masterise Group	Total Number of Units	2,294 units
Project Scale	3 Towers - 39 Floors each	Ownership Type	Long-term Ownership (available for Vietnamese citizens)
		Unit Types	Studio, 1 BR, 1 BR+, 2 BR, 2 BR+, 3 BR

*This is a computer generated image and is intended for advertising purposes only



THE AURA

WHERE LIFE IS ENLIGHTENED

As luminous as a beacon of light, The AURA pioneers an innovative green living in collaboration with acclaimed partners. The Aura story is a rich source of inspiration, that is sophisticatedly evident in every architectural detail with impeccable international quality standards, solidifying the epitome of luxury living.

*This is a computer generated image and is intended for advertising purposes only

◆ Indoor Amenities /1st Floor/

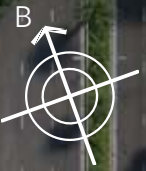
1. Reception Desk
2. Welcoming Lobby
3. Community Room
4. Business lounge
5. Library
6. Kids' Playroom
7. International Standard Gymnasium

◆ Indoor Amenities /20th Floor/

- | | |
|---------------------------|--------------------------------------|
| 8. Yoga Deck | 20. Main Pool |
| 9. Meditation Garden | 21. Kids' Pool |
| 10. Cross-training Zone | 22. Water Playground |
| 11. Seating & Lounge | 23. Pre-shower |
| 12. Stars Artwork | 24. Wet sunbed area |
| 13. Light Garden | 25. Jacuzzi |
| 14. Air Purifying Garden | 26. Indoor Playground |
| 15. Tropical Garden | 27. Kids' Playroom |
| 16. Working Zone | 28. International Standard Gymnasium |
| 17. Children's Playground | 29. Moonlight Lake |
| 18. Air Purifying Garden | 30. Meditation Garden |
| 19. Studying Zone | |

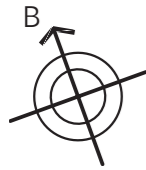
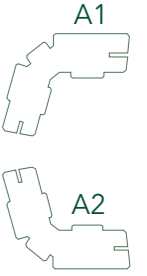
◆ Outdoor Amenities

- | | |
|------------------------------|----------------------|
| 31. Four Seasons Dining Area | 46. Changing Room |
| 32. Tropical Garden | 47. Fountain Curtain |
| 33. BBQ Area | 48. Rosa Garden |
| 34. Aura Feature | 49. Multi Court |
| 35. Galaxy Promenade | 50. Exercise Node |
| 36. Spill Out Area | 51. Ping Pong Zone |
| 37. Adventure Playground | 52. Zen Spring |
| 38. Pool Deck | 53. Meditation Deck |
| 39. Main Pool | 54. Sun Garden |
| 40. Kid's Pool | 55. Amphitheatre |
| 41. Pre-shower | 56. Therapy Garden |
| 42. Dry Sunbed Area | 57. BBQ Area |
| 43. Wet Sunbed Area | 58. Water Feature |
| 44. Seating & Lounge | 59. Music Playground |
| 45. Water Playground | 60. Green Park |



Typical Floor Plan

Floor 12-19; 21-39



Caution:

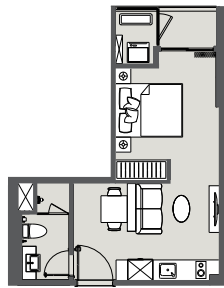
We have made every effort and taken great care to complete this document. However, this document is for reference purposes only. The images, technical diagrams, interior and exterior layouts, or descriptive information are for illustrative purposes and do not constitute actual information or legal commitments. Official information is based on the contract. The apartment name and apartment code are for introductory purposes; the official apartment name and code will be recorded in the Purchase Contract. Note: The final usable area of the apartment will be verified by the measurement unit.

Notes

Color	Grey	Light Green	Medium Green	Dark Green	Very Dark Green	
Apartment	Studio	1BR	1BR+	2BR	2BR+	3BR

Built-up area: BU Area
Carpet area: CA Area

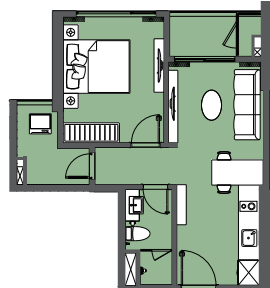
Typical Unit Plan



Main entrance

STUDIO

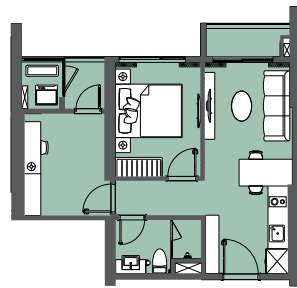
36.1m² Built-up area
32.2m² Carpet area



Main entrance

1 BEDROOM

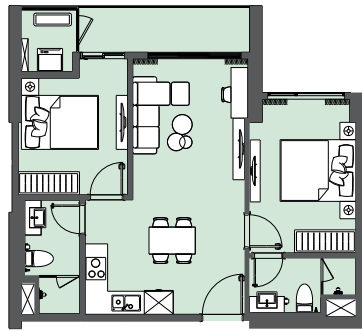
49.0m² Built-up area
44.5m² Carpet area



Main entrance

1 BEDROOM +

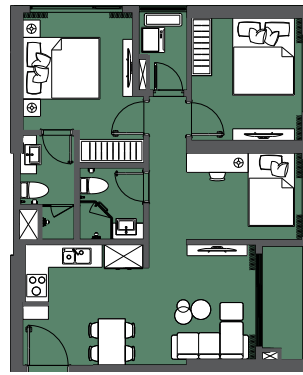
51.9m² Built-up area
46.7m² Carpet area



Main entrance

2 BEDROOM

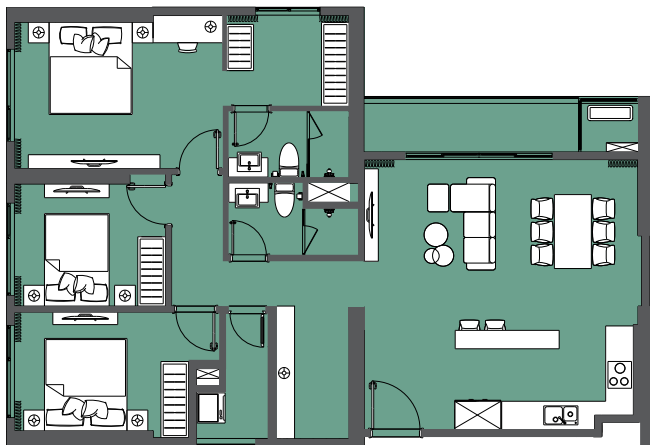
66.1m² Built-up area
61.1m² Carpet area



Main entrance

2 BEDROOM +

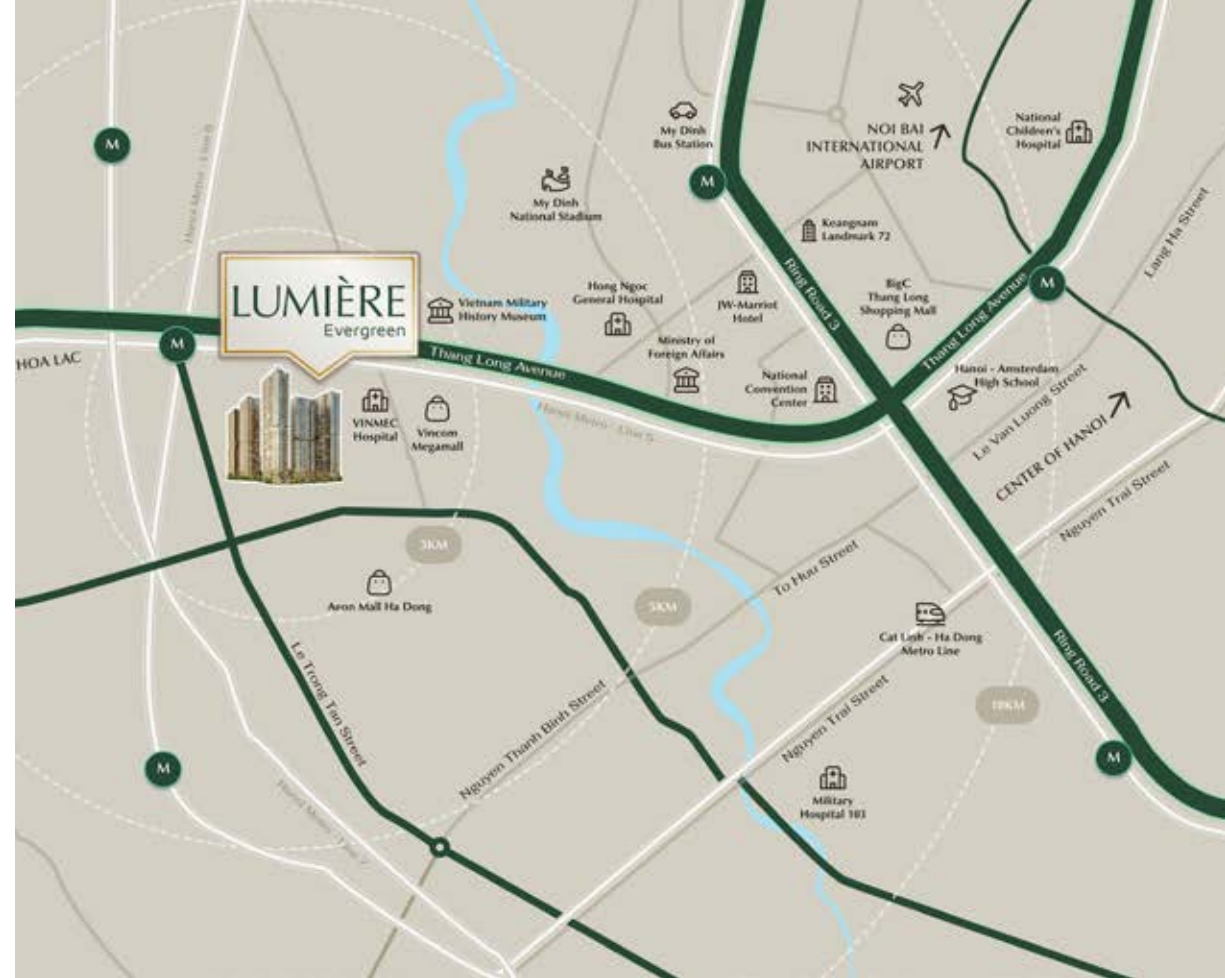
70.4m² Built-up area
64.1m² Carpet area



Main entrance

3 BEDROOM

115.0m² Built-up area
106.3m² Carpet area



1
MIN

All Smart City internal amenities

2
MIN

AEON Mall Ha Dong
Thang Long Avenue and primary roads leading to the center of Hanoi

5
MIN

Ministry of Foreign Affairs
National Convention Center
My Dinh National Stadium
Hong Ngoc General Hospital

7
MIN

Big C Thang Long Shopping Mall
My Dinh Bus Station
Hanoi - Amsterdam High School
Keangnam Landmark 72

Other amenities in the western part of Hanoi

10
MIN

Military Hospital 103
National Children's Hospital

20
MIN

Center of Hanoi - Hoan Kiem Lake, West Lake

40
MIN

Noi Bai International Airport



*Master Bedroom Perspective

Exquisite Living

Where life is inspired by timeless accent of architecture and interiors, with comfortably modern and gorgeously appointed spaces, thoughtfully crafted by leading partners.



*Living Room Perspective



*Living Room Perspective

Inspirational Design

Where the selection from prestigious global partners and their unwavering commitment to excellence serves for a ultimate living experience.

Exceptional Quality

Where the transcendence of unmatched craftsmanship sets a new standard beyond conventions with utmost refinement.



*Lobby Area Perspective



*Reading Area Perspective



*Business Lounge Perspective



*Gym Area Perspective

LUMIÈRE
Evergreen

CHOOSE LIVING
FOR MORE

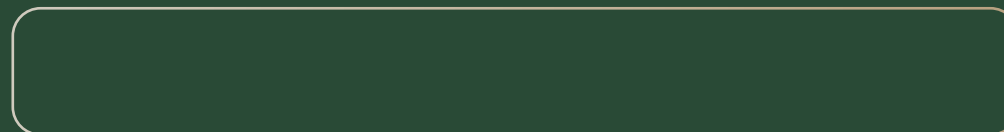
A New International Community.
Smart City, Hanoi


DEVELOPED BY




MASTERISE HOMES

Smart City, Tay Mo - Dai Mo Ward, Nam Tu Liem District, Hanoi



 (028) 39 159 159

 sales@masterisehomes.com

 masterisehomes.com/lumiere-evergreen

 facebook.com/LumiereEvergreenOfficial



Note: We have made efforts and taken precautions to complete this document. However, the document is for reference purposes only. Images, technical diagrams, interior and exterior layouts, or descriptive information are for illustrative purposes only and are not actual information or legal commitments. Official information about the project (including but not limited to: building name, subdivision, apartment information, area, amenities, etc.) will be based on the purchase contract and the documents agreed upon and officially signed with the customer.